

Solution Provider Profile

CreateLMS

January 2025



Company At-a-Glance	
Name of Product/Offered	CreateLMS
Headquarters	Wroclaw, Poland; and Glasgow, Scotland
Year Founded	2013
Geographic Coverage	Worldwide
Top Customers	Comcast, Invisalign, AccessHealthcare, Scottish Rugby
Website	https://CreateLMS.com https://samelane.com https://nsFlow.com https://neurosys.com

CreateLMS Solution Overview and Value Proposition

CreateLMS is a forward-thinking learning management system (LMS) that prioritizes adaptability, learner engagement, and robust features. With a strong emphasis on customization and modern learning methodologies, the platform enables organizations to craft personalized learning journeys that resonate with their audience.

CreateLMS boasts a headless architecture, providing unparalleled flexibility and integration capabilities. Its robust feature set includes gamification, social learning, mobile accessibility, and e-commerce functionalities, ensuring a solution for diverse learning and development needs.

CreateLMS's foray into innovative technologies like Augmented Reality (AR) and Virtual Reality (VR) showcases its commitment to innovation and delivering immersive learning experiences. This, coupled with their focus on learner-centric design, positions CreateLMS as a valuable asset for organizations seeking to elevate their training and development programs in today's digital age.

Value Proposition

CreateLMS's core value proposition is anchored in its ability to empower personalized learning experiences that drive engagement, knowledge retention, and, ultimately, organizational success. The platform achieves this through a combination of:

- **Learner-Centric Design:** CreateLMS places the learner at the heart of its design philosophy. The platform's intuitive interface, customizable learning paths, and gamified elements foster an engaging and interactive learning environment, catering to diverse learning styles and preferences.
- **Flexibility & Customization:** The headless architecture of CreateLMS offers unparalleled flexibility, allowing organizations to integrate the platform with their existing technology ecosystem and tailor the learning experience to their specific branding and content requirements.
- **Immersive Learning Technologies:** CreateLMS embraces emerging technologies like AR and VR to create realistic and interactive training simulations. These immersive experiences enhance learner engagement and facilitate the practical application of new knowledge and skills.
- **Data-Driven Insights:** CreateLMS provides robust reporting and analytics capabilities, empowering organizations to track learner progress, assess the effectiveness of their training programs, and make data-driven decisions to optimize their L&D strategies.
- **Scalability & Adaptability:** The platform is designed to scale with the needs of organizations of all sizes, from small businesses to large enterprises. Its flexible architecture and cloud-based deployment ensure that it can evolve alongside the organization's growth and changing requirements.

Key Features & Capabilities

- **Headless LMS:** The headless architecture separates the front end (user interface) from the back end (content management and delivery), offering unparalleled flexibility and integration capabilities. Organizations can leverage their preferred front-end technologies while utilizing CreateLMS's back-end functionalities.
- **Gamification & Social Learning:** CreateLMS incorporates game elements such as points, badges, and leaderboards to motivate learners and foster a sense of achievement. Social learning features like discussion forums and collaborative tools encourage interaction and knowledge sharing among learners.

- **Mobile Accessibility:** The platform's responsive design ensures access to learning content on any device, empowering learners to learn at their own pace and convenience.
- **E-commerce Integration:** CreateLMS enables organizations to monetize their learning content through integrated e-commerce functionalities. This provides an additional revenue stream and allows for a wider reach of training programs.
- **AI-Powered Recommendations:** CreateLMS leverages artificial intelligence to provide personalized learning recommendations based on learners' interests, skills, and past performance. This ensures that learners receive the most relevant and impactful content, maximizing their learning outcomes.
- **Advanced Reporting & Analytics:** The platform offers robust reporting and analytics capabilities, allowing organizations to track learner progress, assess training effectiveness, and identify areas for improvement.
- **Customizable Learning Paths:** CreateLMS enables the creation of personalized learning pathways to cater to the unique needs and goals of each learner. This approach enhances engagement and accelerates skill development.
- **Multi-Tenancy:** For organizations with multiple divisions or subsidiaries, CreateLMS's multi-tenancy feature allows for the creation of separate learning environments while maintaining centralized administration and control.
- **Workflow Automation:** The platform streamlines administrative tasks through automated workflows, saving time and reducing manual effort.
- **Integrations:** CreateLMS integrates with various third-party systems, including HRIS, CRM, and webinar platforms, enabling smooth data flow and enhanced functionality.

Why Choose CreateLMS

CreateLMS stands out from traditional LMS providers through its focus on:

- **Learner-Centric Design:** The platform prioritizes the learner experience, offering an intuitive interface, engaging features, and personalized learning pathways.
- **Flexibility & Customization:** The headless architecture and extensive customization options allow organizations to create a truly tailored learning environment.
- **Innovative Technology:** CreateLMS embraces emerging technologies like AR and VR to deliver immersive and impactful learning experiences.

- **Measurable Results:** Robust analytics and reporting capabilities enable organizations to track progress and demonstrate ROI.
- **Customer Success:** CreateLMS provides exceptional customer support and guidance throughout the implementation and adoption process.

CreateLMS is an adaptable learning management system that empowers organizations to transform their L&D initiatives. By leveraging learner-centric design, innovative technology, and data-driven insights, CreateLMS helps businesses create engaging and impactful learning experiences that drive employee development, enhance performance, and ultimately achieve organizational success.

Screenshots

Figure 1: Learner Panel — Communiques

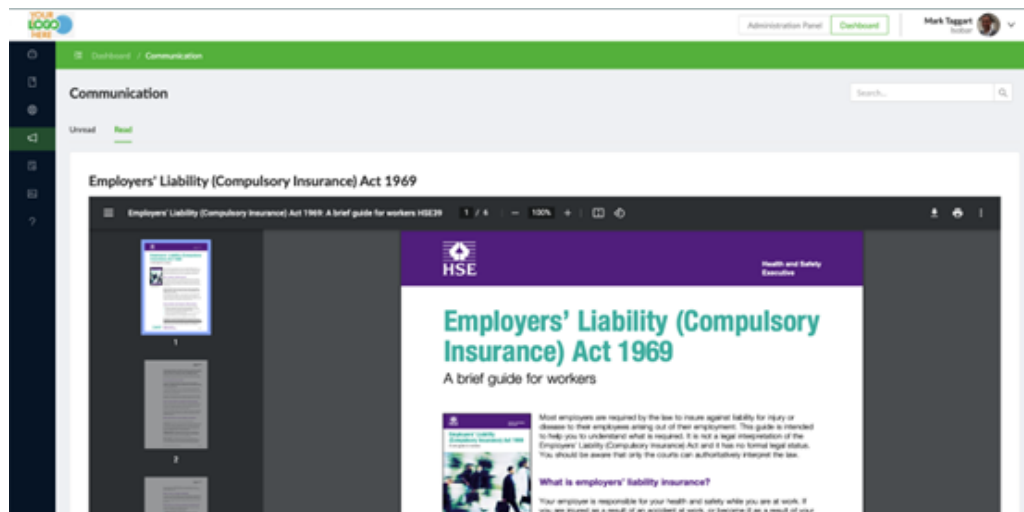


Figure 2: Learner Panel — Dashboard

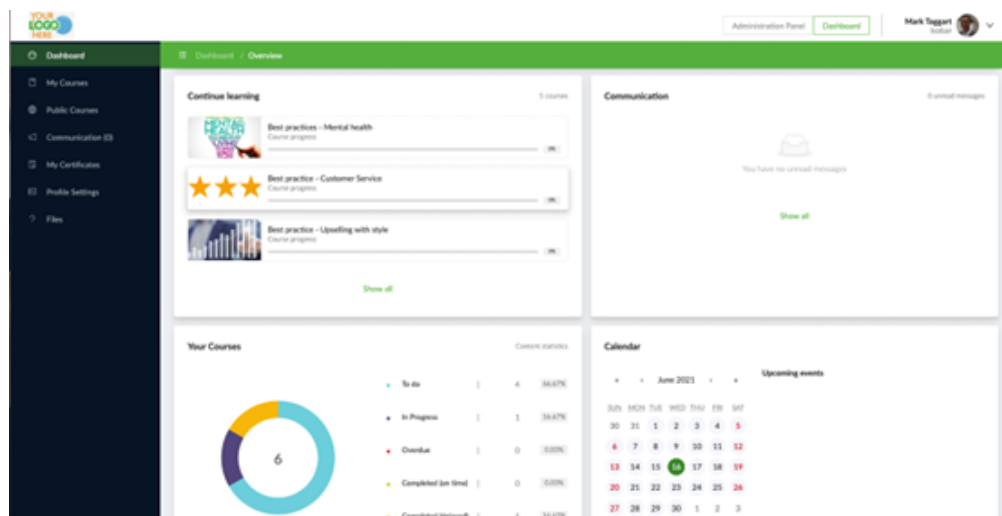


Figure 3: Learner Panel — My Courses

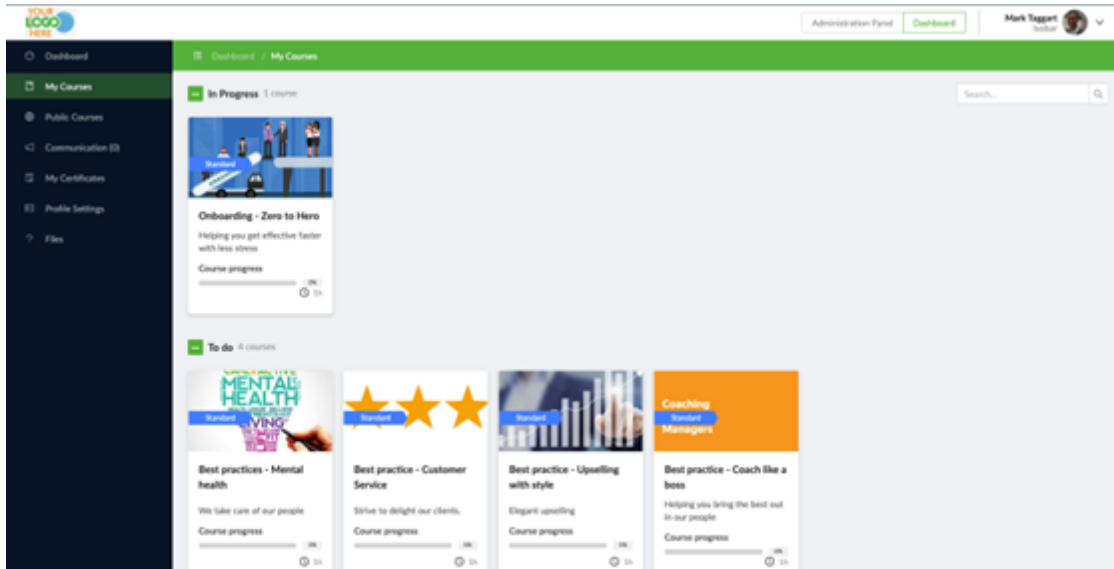


Figure 4: Admin Panel

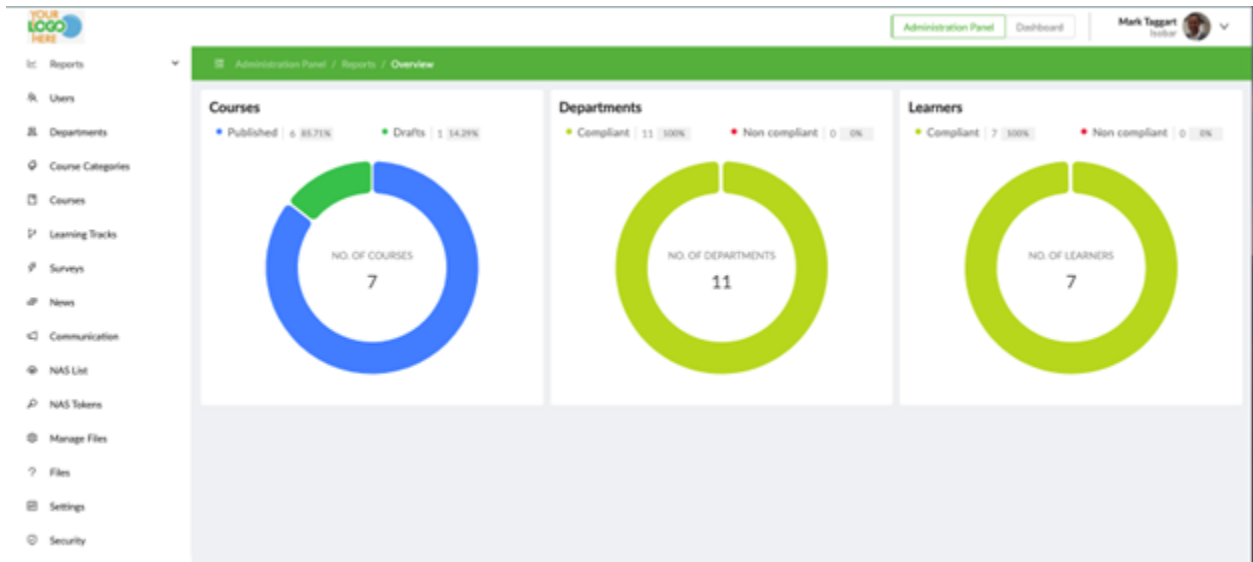


Figure 5: Course Builder

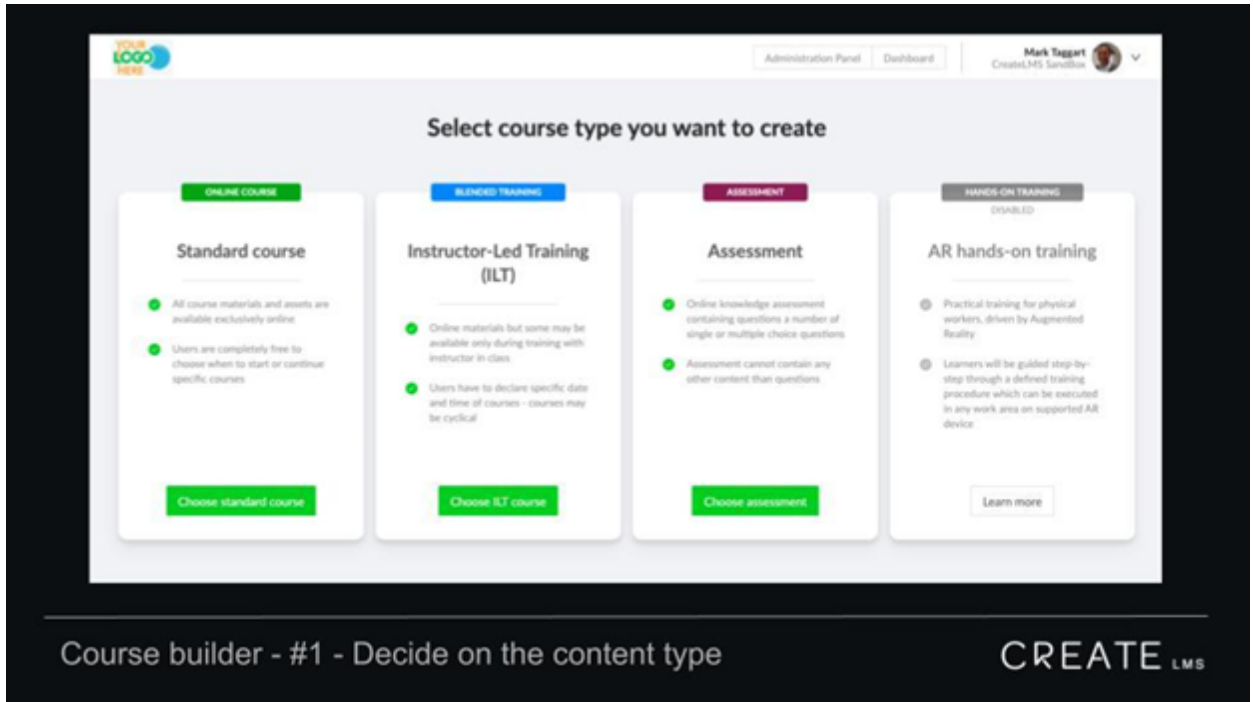


Figure 6: Augmented Reality View through Headset

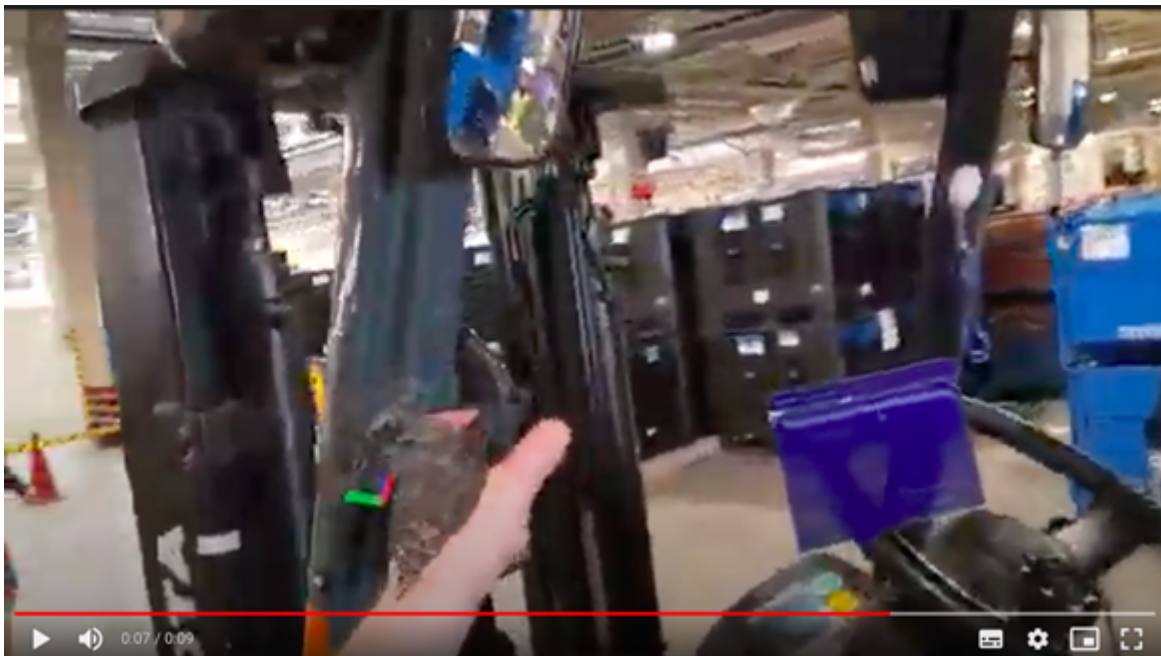


Figure 7:
AI System's View of the Same Picture — Did the Driver Follow Procedure?



All screenshots provided by CreateLMS

Analysis by Brandon Hall Group™

Situational Analysis

Traditional Learning Management Systems (LMS) often struggle to meet the evolving needs of modern learners and organizations. With the rise of remote work, diverse learning styles, and the demand for personalized experiences, businesses require flexible, adaptable, and engaging learning solutions.

Challenges to the Business

Providing tailored learning experiences to a diverse workforce while ensuring efficiency and scalability is another key challenge.

The integration of LMS with other crucial business systems also poses difficulties for many organizations, creating fragmented data and inefficient processes. Lastly, the rapid pace of change demands L&D solutions that can evolve and adapt, highlighting the need for adaptable learning technologies.

Implications for the Business

Failure to address these challenges can result in a significant disadvantage for organizations. An ineffective L&D strategy can lead to a disengaged workforce, skill gaps, and missed opportunities for growth and innovation. In contrast, organizations that invest in modern, impactful learning solutions can unlock the full potential of their employees, improve performance, and gain a competitive edge.

Questions to be Answered by the Business

In the pursuit of effective learning and development strategies, organizations must grapple with crucial questions that can significantly impact their ability to upskill their workforce and achieve business objectives.

- How can the organization design learning experiences that truly captivate learners and foster long-term knowledge retention?
- What strategies can the organization employ to personalize learning at scale and cater to the diverse needs of its workforce?
- How can the organization ensure that its learning technology integrates with its existing systems and workflows?
- What solutions can the organization implement to future-proof its L&D initiatives and adapt to the evolving needs of the business?

CreateLMS as the Answer

CreateLMS addresses the challenge of learner disengagement head-on. It incorporates gamification elements, AR/VR, social learning tools, and mobile accessibility to create a dynamic and interactive learning environment. By tapping into learners' intrinsic motivations and catering to diverse learning styles, CreateLMS transforms training from a mundane task into an engaging and rewarding experience.

Their AI-powered recommendations, coupled with customizable learning pathways, ensure that learners receive content tailored to their individual needs and skill levels. This personalized approach maximizes engagement and accelerates knowledge acquisition and skill development.

Efficient integration is another cornerstone of CreateLMS's value proposition. The platform's headless architecture offers unparalleled flexibility, allowing organizations to integrate it with their existing technology ecosystem and tailor the user interface to their specific branding requirements. This creates a consistent and familiar learning experience for employees while minimizing disruptions to existing workflows.

Moreover, CreateLMS's commitment to innovation is evident in its embrace of innovative technologies. Their support for AR and VR training enables organizations to create immersive and interactive learning experiences that simulate real-world scenarios. This approach bridges the gap between theory and practice, fostering deeper understanding and improving knowledge retention.

CreateLMS provides a solution for organizations seeking to transform their L&D strategies. By prioritizing learner engagement, personalization, data-driven insights, and technological innovation, CreateLMS empowers businesses to cultivate a culture of continuous learning, drive employee development, and achieve measurable business outcomes.

Contribution Team:

Alan Mellish, Claude Werder, Michael Rochelle, Mike Cooke,
Rachel Cooke, Roberta Gogos, Matt Pittman, Pat Fitzgerald

About Brandon Hall Group™

With more than 10,000 clients globally and more than 30 years of delivering world-class research and advisory services, Brandon Hall Group™ is focused on developing research that drives performance in emerging and large organizations, and provides strategic insights for executives and practitioners responsible for growth and business results.

Professional Certifications

Self-paced certification programs. Virtual group sessions for companies. In-person conferences and summits.

Excellence Awards

Three annual programs recognize the best organizations that have successfully deployed programs to achieve measurable results.

Membership

Individual and Enterprise Membership options: Includes research assets, advisory support, a client success plan and more.

Advisory Offerings

Custom research projects, including surveys, focus group interviews and organizational needs assessments for transformation, technology selection and strategy.



ENTERPRISE EXCELLENCE CERTIFICATION PROGRAM

Recognizes the best HCM programs that transform their organization and achieves breakthrough results. This designation is a step above the HCM Excellence Awards® which focuses on one program within a company. Enterprise Excellence is a hybrid of award winners who are also members.

SMARTCHOICE® PREFERRED PROVIDER PROGRAM

Uniquely places HCM service and technology companies at the top of organizations' consideration list of vendors. It adds an unmatched level of credibility based on BHG's thirty-plus years of experience in evaluating and selecting the best solution providers for leading organizations around the world.

AGENCY! BY BRANDON HALL GROUP™

Provides comprehensive marketing solutions for human capital management solution providers. We offer strategic services to establish a strong foundation for your marketing efforts.